



Druvaa inSync – Reports

© Druvaa Software 2008 | Nov 2008

The document gives an overview of Druvaa inSync and discusses the various reporting options available.

Druvaa inSync – Overview

Druvaa inSync is an enterprise class product for secure and continuous backup of your critical PC data to a central enterprise server over LAN or WAN.

Druvaa inSync is an ideal solution for increasing personal data availability for improved business continuity and recovery. The light weight inSync client non-intrusively and non-disruptively monitors changes to critical data and *securely* syncs the delta changes to a central enterprise server.

The powerful features like bandwidth scheduler and WAN optimizer makes it ideal for traveling enterprise users who don't have a secure and dedicated connectivity to office servers.

Good reporting adds up to the product experience. This document discusses the advanced reporting features in Druvaa inSync which makes backup process more reliable. The administrator can use the inSync server management console to view **live server health**, and check **vital statistics for each user** and **configured storage**. The inSync server also offers **six different comprehensive reports** which can be scheduled for delivery via email. These reports help the administrator take better control of the backup installation.

Druvaa inSync – Reporting

The inSync server management console supports three types of reporting –

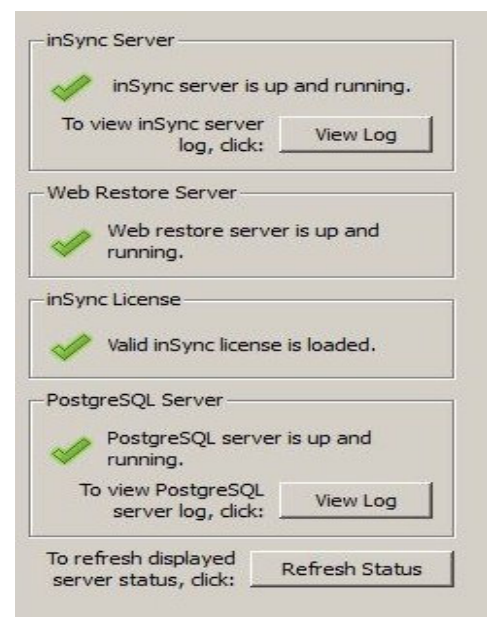
1. Live Statistics
2. Instant Email Alert Notifications
3. Detailed Email Reports

Live Statistics

The management console offers live statistics for server health, users and storage. These statistics show point-in-time state of the backup installation.

Server Status

The server status (as shown in the screen below) shows the current status for all essential system services like inSync Server service, inSync web-restore server and PostgreSQL database service.

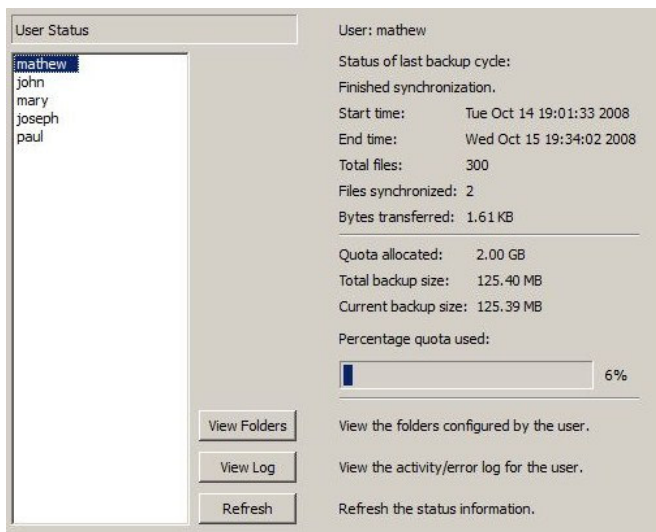


User Status

The console displays vital statistics for each configured user like –

- Last backup time
- Last backup files and bytes transferred
- Folder configured
- Activity log

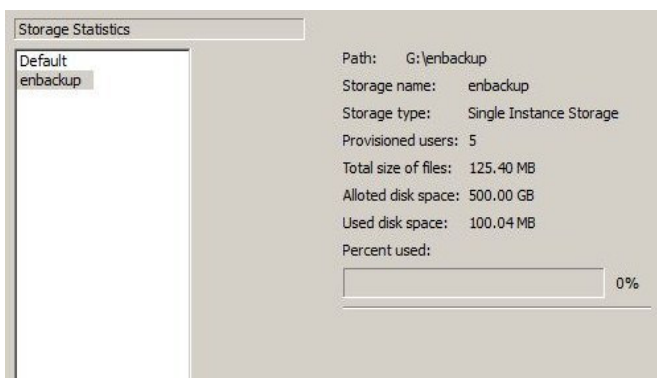
The user statistics prove very important to the admin especially for remote users.



Storage Status

The storage status shows vital statistics like –

- Total users provisioned
- Total size of files in storage
- Disk space consumed



These statistics are especially useful for the encrypted SIS store, as it shows de-data duplication action. (The difference between “size

of files” and “used disk space” gives the amount of data removed as duplicate).

Alert Email Notifications

Each time a notification trigger is hit or error is generated, the server generates alert and immediately sends the administrator a short email describing the same. The administrator can also use the “Active Alerts” or “History of Alerts” report (described in next section) to get a cumulative update on alerts.

The following alerts are used by the server –

- User hasn't synced for a while
- Client sync operation appears to have stalled
- Storage usage exceeds set threshold
- User storage usage approaching or exceeded set threshold
- Client application reported error
- Client synced successfully
- Client sync failed
- PostgreSQL service not running or credentials incorrect
- Storage compaction completed
- Restore request done

The screenshot below shows alert email sent to the administrator.

New alert from Druvaa inSync

Time: Wed Oct 15 21:17:26 2008

Type: PostgreSQL service not running or credentials incorrect

User: inSync Administrator

Alert Message: The PostgreSQL service could not be contacted. This could be because the service is down or the credentials are incorrect. Please check the PostgreSQL service

Email Reports

The server sends out comprehensive backup reports as HTML attachments to the administrator's email id. Following reports are supported –

- Active Alerts** – List of critical alerts currently active in the system.
- Alert History** – List of critical alerts and notifications sorted by time of occurrence.
- Failed Backups** – List of users with failed backups sorted by user name.
- Last backup status** – Last backup and disk quota status for all users sorted by user name.
- Storage status** – Vital statistics (percentage full, total size, users allocated etc.) for all storage configured.
- Complete Report** – Full report with list of user backup status (sorted by user name), storage status and history of alerts.

The admin can independently schedule the reports. The screenshot below shows the report configuration dialog.

The screenshot below shows a snapshot of the complete report.

Storage Statistics:

Storage name	Storage path	SIS	No. users	Max disk size	Storage used	Disk used	Percent disk used	Disk usage alert (%)
Default	C:\inSyncServer\inSyncStore	No	0	100.00 GB	0.00 B	0.00 B	0.00	90.00
encrypted	G:\encryptedbackup	Yes	1	100.00 GB	346.35 MB	183.82 MB	0.18	90.00
encrypted2	G:\encrypted-store	Yes	2	10.00 GB	615.02 MB	303.58 MB	2.9%	80.00

User Activity:

User	Last Synced At	Files Synced	Files Missed	Total Size	Synced Data	Status
jaspreet	-	-	-	-	-	Never Synced
mathew	Tue Oct 07 22:14:02 2008	1	0	615.02 MB	19.71 KB	Finished synchronization.
prashant	-	-	-	-	-	Never Synced

User Alerts:

Entity	Alert	First seen	Last seen	Notified	Active
User: jaspreet	User hasn't synced for a while	Wed Oct 08 12:42:25 2008	Wed Oct 08 12:49:28 2008	No	Yes

Summary

This document demonstrates the reporting capabilities of Druvaa inSync server and how they help the administrator manage large enterprise installations. The administrator can view live server statistics, receive instant alert notifications and schedule comprehensive reports. This helps the administrator troubleshoot, manage configuration and fine-tune system better.

About Druvaa

Druvaa provides enterprise class consultancy and solutions for data availability and business continuity. Information about Druvaa can be obtained from www.druvaa.com

